



AT&T Business in a Box[®] Quick Start Guide

Please ensure that you have set-up the equipment before the date scheduled with your AT&T Order Manager for Test and Turn Up of your service

What's in the Box

The following components are included in your router package:



AT&T Business in a Box® 12 or 24 Port
Base Unit Router



Router power cable



Site Documentation
Package



RJ11 modem cable
Labelled ISE644 (Qty 1)

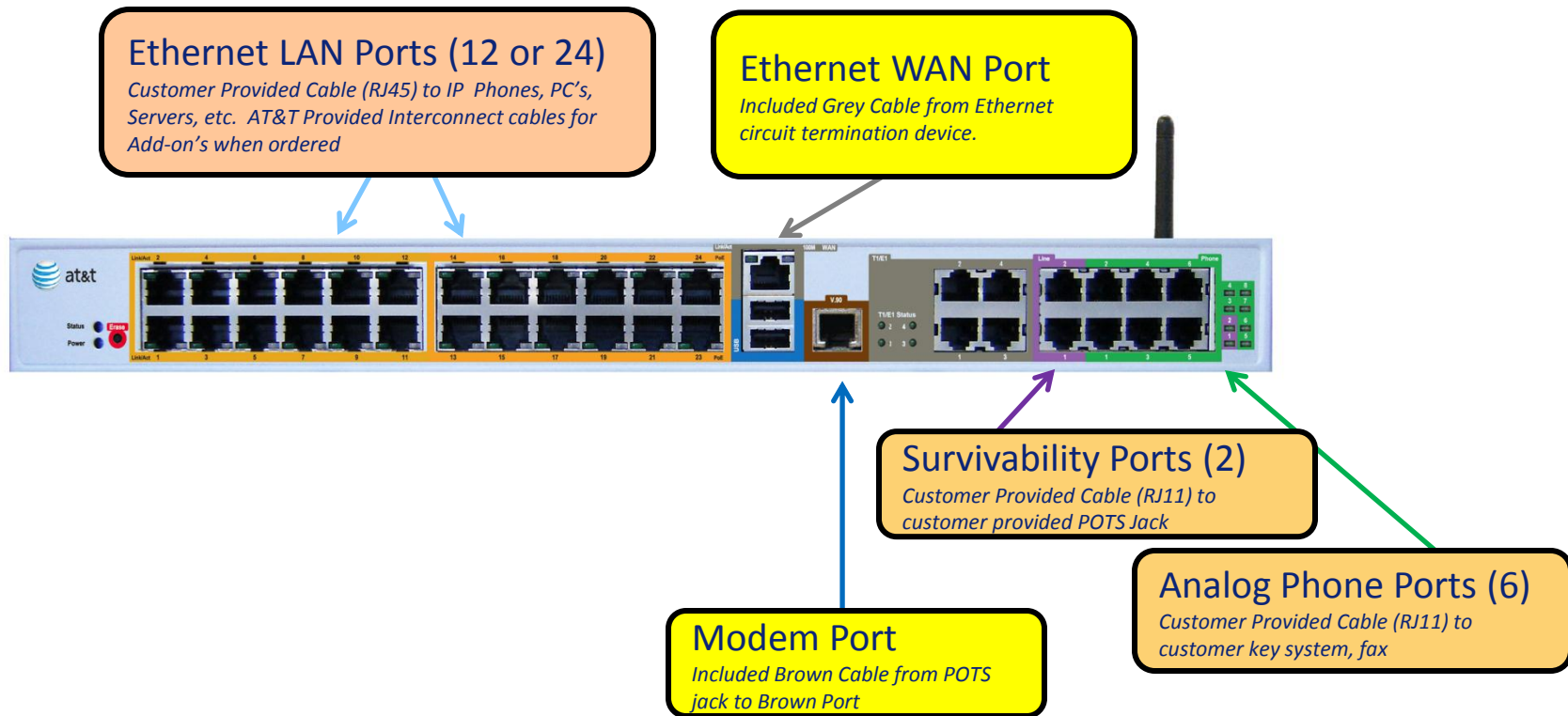


RJ45 Ethernet cable CAT6
Labelled ISE1015-025 (Qty 1)



Understanding your AT&T Business in a Box[®] Equipment

AT&T Business in a Box[®] 12 or 24 Port Base Unit Router (24 port depicted)



Step 1 – Wall Mounting Instructions (optional to Rack Mounting)

The AT&T Business in a Box[®] router may be wall mounted on a $\frac{3}{4}$ " or thicker plywood backing. The unit is too heavy to be mounted to drywall. Use the two (2) rack-mount brackets, eight (8) bracket screws (included) and four (4) $1\frac{1}{2}$ " wood screws (not included).

Complete the following steps:

- 1) Position the device so that the front panel is facing down and apply the rack-mount brackets with bracket screws to each side as shown in Figure 1. Rack-mount bracket position.
- 2) Attach the bracket to $\frac{3}{4}$ " or thicker plywood backing using four (4) $1\frac{1}{2}$ " wood screws as shown in Figure 2. Rack-Mount bracket on plywood backing.

Important: Cables will flow down and should be dressed using a wire minder. The unit should be mounted high enough that the technician can see the status lights**. See Figure 3 Installation example.

** It is recommended, but not required that a skilled technician mount the router on the wall.

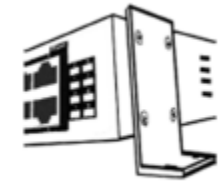


Figure 1. Rack-mount bracket position

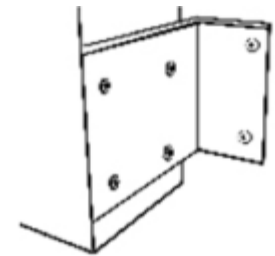


Figure 2. Rack-mount bracket on plywood backing

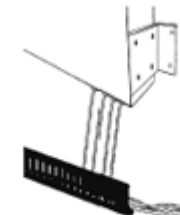
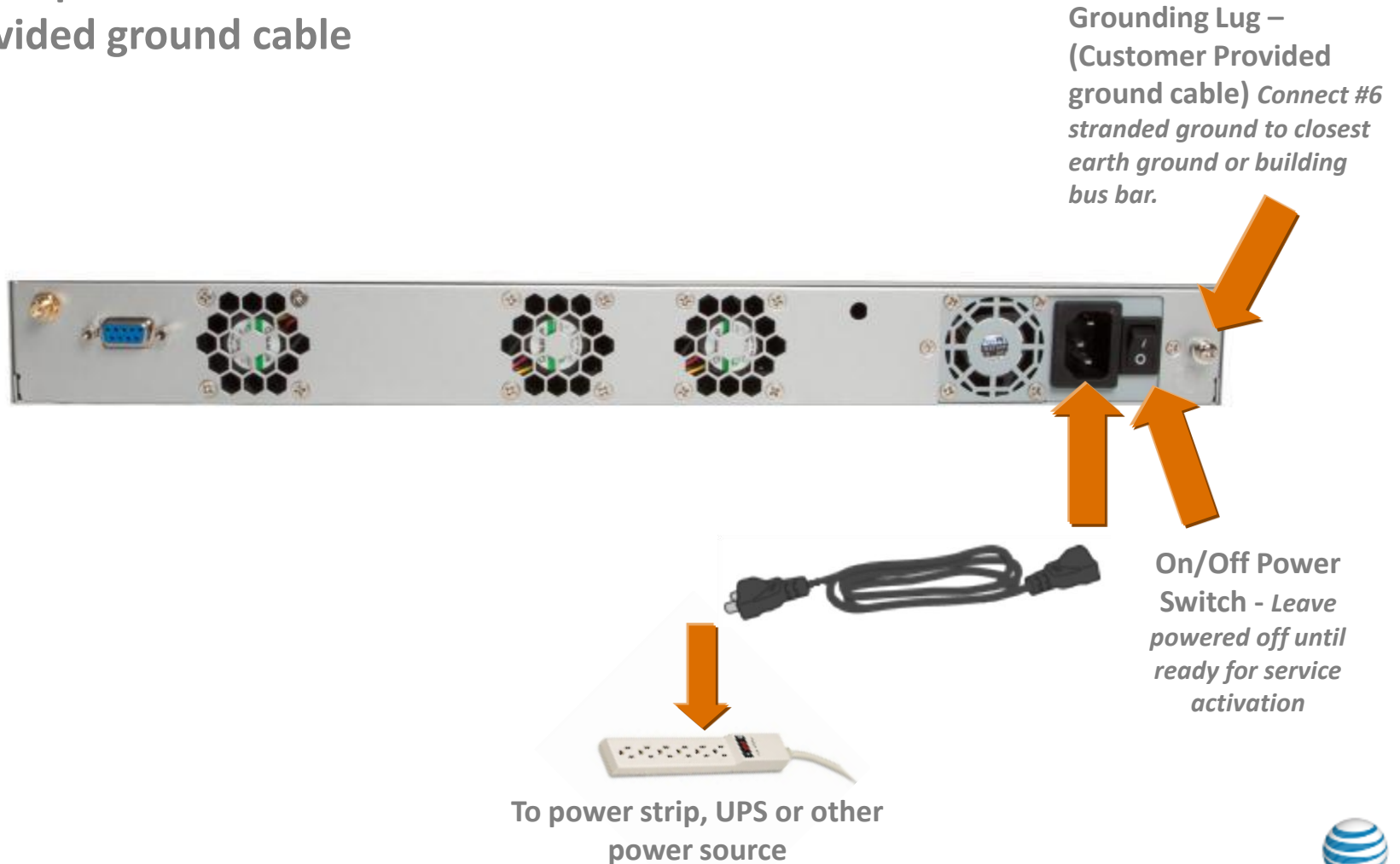


Figure 3. Installation example



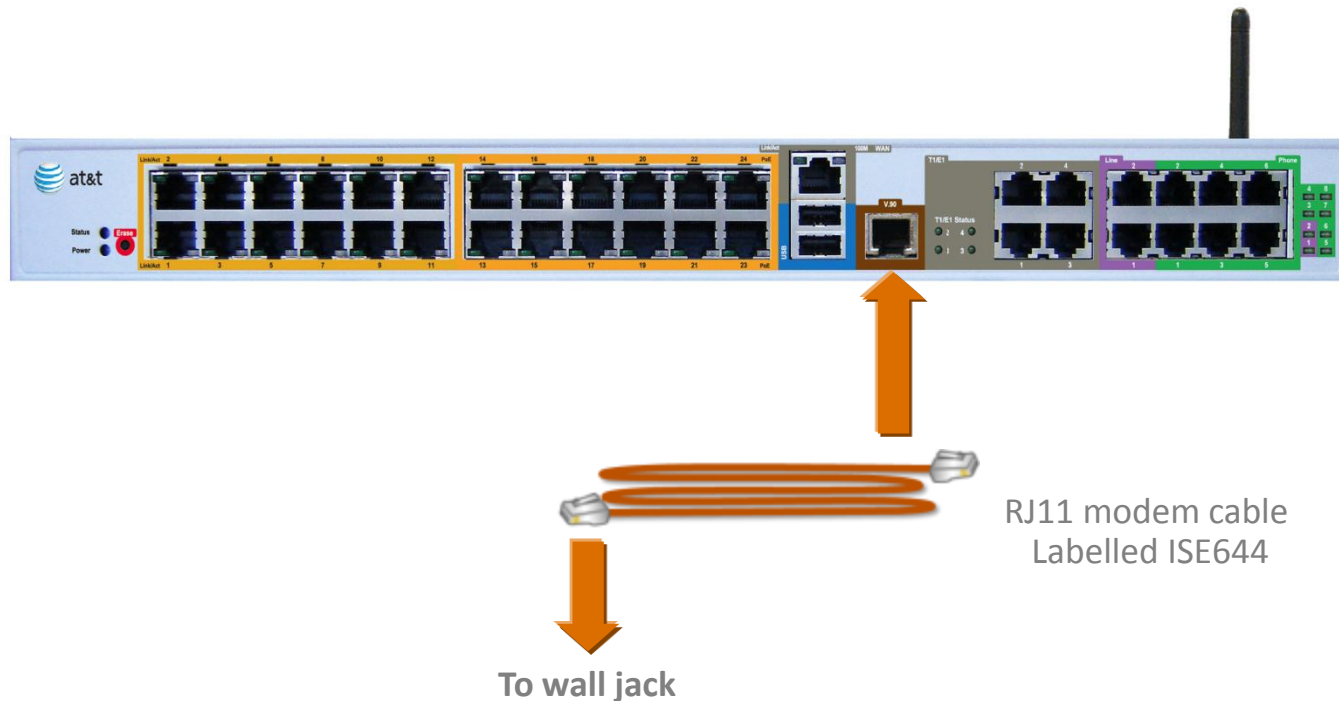
Step 2 - Attach Power Cord to Router and Proper Grounding

Plug in power cord to router and attach customer provided ground cable



Step 3 - Connect Analog POTS line to Internal Modem

Connect customer provided Analog POTS line from wall jack to the internal modem using the provided brown RJ11 cable.

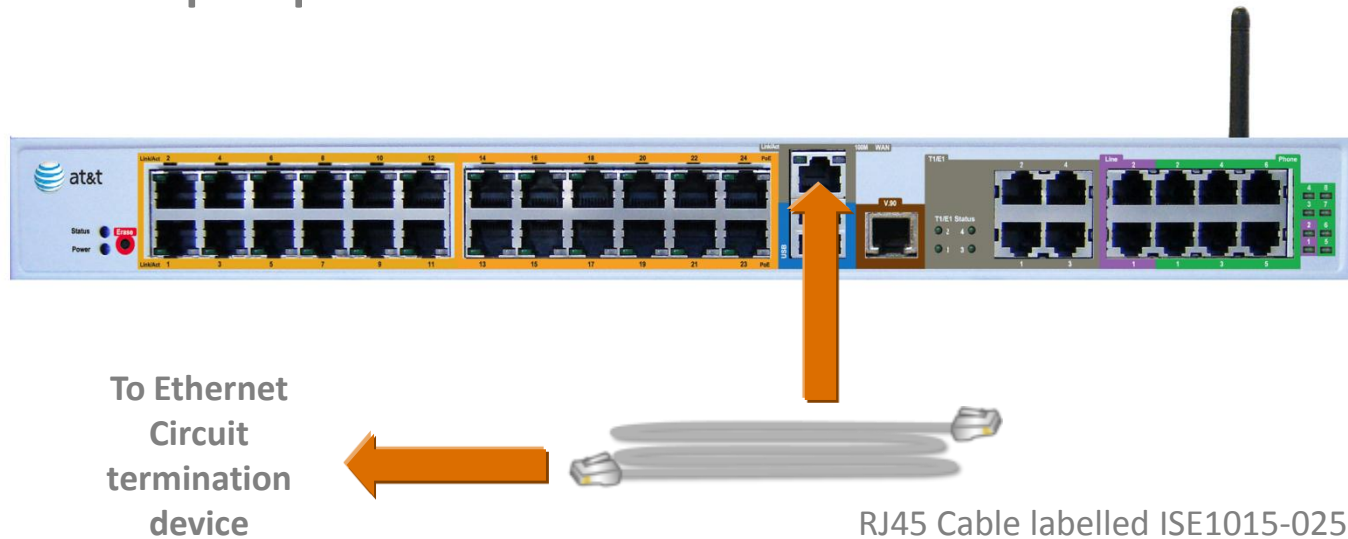


Note: The POTS line may be used in the turn-up of your service as well as by AT&T's Global Customer Service Center.



Step 3 - Connect Router to Ethernet Circuit

Connect your Ethernet circuit using the Grey Ethernet cable to the Ethernet WAN port pictured below.

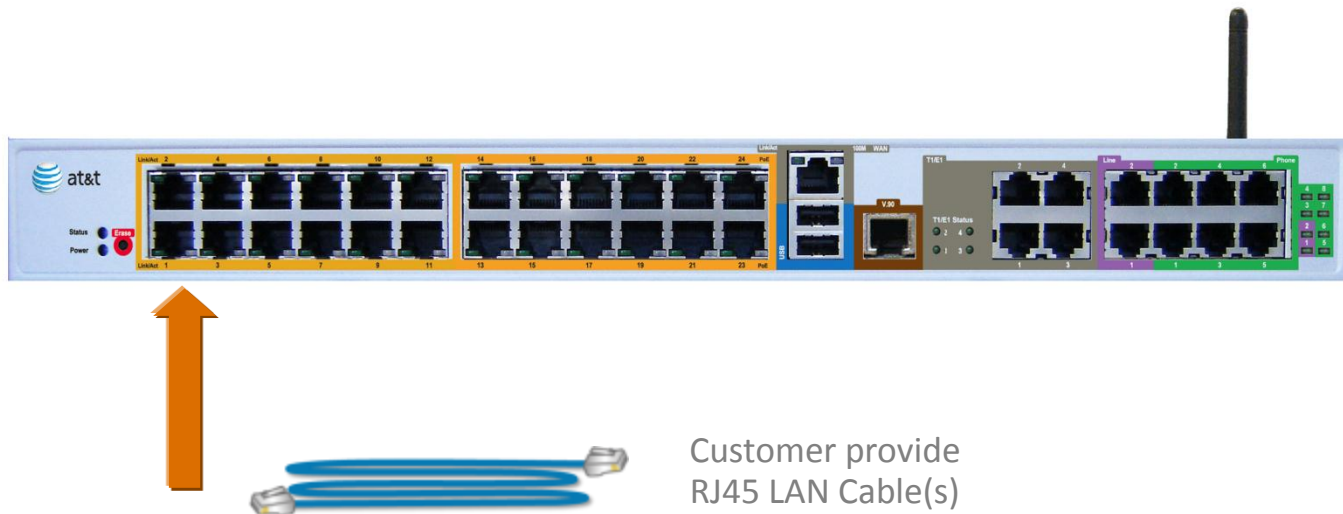


Note: The Ethernet WAN port on the router is electrical not optical.



Step 4 - Connect Router to your Ethernet Devices

Connect your Ethernet devices (PC's, printers, servers, etc.) to the integrated Ethernet switch or per instructions in your Site Documentation Package.

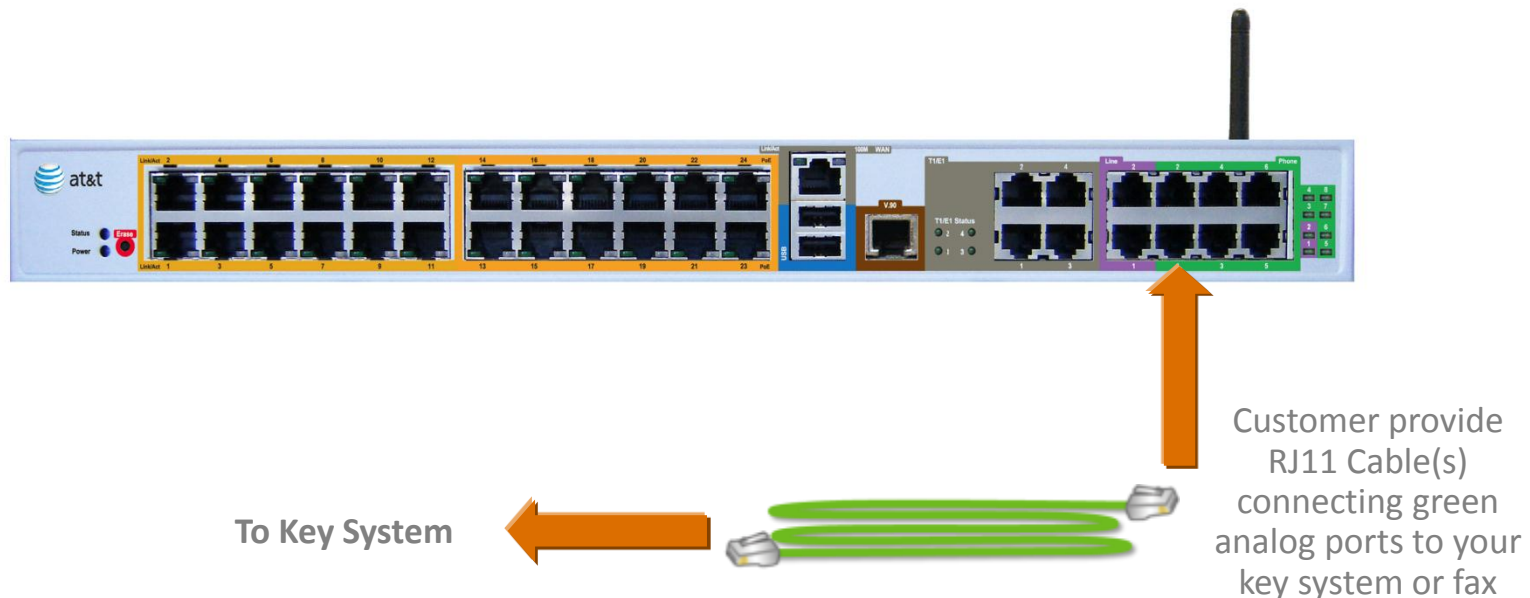


Note: If utilizing your own Ethernet switch/firewall behind the AT&T Business in a Box[®] router then utilize only Port 2 to interconnect.



Step 5 - Connect Router to your Analog Key System

Connect to your Analog Key System and/or Fax per instructions in your Site Documentation Package.



Step 7 (optional) - Connect Router to Analog POTS for Outbound Site Survivability

Connect up to 2 customer provided POTS lines to purple ports for outbound calling survivability.



To wall jack



Customer provide RJ11 Cable(s) connecting purple analog ports to customer provided POTS line(s)



AT&T Business in a Box[®] User Guide

AT&T Business in a Box includes integrated Wi-Fi capabilities available with your service. A User Guide is available to assist customers with logging into the device using a web browser and configuring to your needs.

