

AT&T Business in a Box[®]

User Guide

For use with
AT&T VPN Solutions

Thank you for choosing AT&T Business in a Box® and for allowing us the opportunity to serve you.

AT&T is dedicated to providing you with an exceptional user experience. The AT&T team will work closely with you at every step of the way to help make your experience as easy as possible. Please take a few minutes to review the following information, which includes:

- AT&T Business in a Box® Overview and Important Contact Information
- Customizing your Device(s)

Best Regards,
AT&T

Overview

The AT&T Business in a Box® Converged Networking Router is an intelligent, all-in-one networking solution and provides the following important functions for converged networks:

- A Single Device or Set of Devices and Network Connections that provides combined Voice and Data Service for your business
- Business VoIP (using analog phones, PBX and VoIP Phones)
- Analog Voice Ports
- Outbound Survivability
- LAN ports with Power Over Ethernet (POE) for connecting PC's, Servers, IP Phones, etc.
- Quality of Service (QoS) for voice and data over the same network
- Integrated Wi-Fi Access Point

Important Contact and Support Information

Once your implementation is complete, you will be supported by AT&T Customer Care.

Phone - 866- AVPN-ATT

AT&T Business Direct® – <https://www.businessdirect.att.com>

Additional documentation is available for:

AT&T IP Flexible Reach – <http://www.corp.att.com/bvoip/ipflex/>

Username – att

Password – attvoip

Customer Managed Features Overview

AT&T Business in a Box® includes an integrated Wi-Fi access point supporting 802.11 b/g that can be enabled for use. This feature can be configured by you to your specifications utilizing this guide.

AT&T support for these features is limited to this Users Guide.

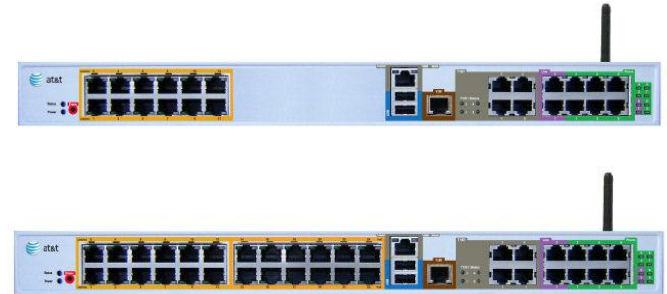
Equipment Overview

During the deployment of service all required equipment will have been installed. Below is a listing of the equipment utilized (as needed).

The contents of the box will include one of the Base Unit devices to the right.

1 Base Unit device (12-port or 24-port PoE)

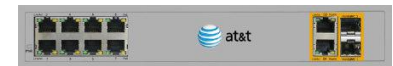
- Power adapter
- Power cable
- Screws for rack mount brackets
- Rack mount brackets (with mounting template & instructions)
- Wi-Fi antenna
- 14' brown RJ-11 cable for v.90
- Gray RJ-45 14' T1 cable
- Power Strip
- Red RJ-45 25' T1 Crossover cable for PRI/TDM PBX customer orders



The following three devices will be provided if required to support your solution:

8-port PoE switches, each of which includes the following components:

- Power supply, including power pack and power cord
- Rack mount brackets (with mounting template & instructions)
- Screws for rack mount brackets
- Orange 7' RJ-45 Ethernet cable



24-port PoE switches, each of which includes the following components:

- Black null modem serial cable
- Power cord
- Rack mount brackets (with mounting template & instructions)
- Screws for rack mount brackets
- Black plastic square feet for desktop installation
- Orange 7' RJ-45 Ethernet cable



8-port analog expansion modules, each of which includes the following components:

- Power adapter
- Power cable
- Screws for rack mount brackets
- Rack mount brackets (with mounting template & instructions)
- Orange RJ-45 7' Ethernet cable
- Analog expansion module stencils
- Screws
- Cable tie
- Self adhesive cable tie base



Customizing your device

The following learning topics in this section will provide you with information on how to log into your AT&T Business in a Box® to then customize to your needs.

Learning Topics:

- Logging into the Base Unit Router
- Configure the wireless (Wi-Fi) settings of the Base Unit Router

Caution

The Erase Button on the back or front of any of the managed devices should never be pressed. Pressing the Erase button will reset the hardware and will fully disable your Voice and Data connectivity which will require either a replacement and/or onsite technician to reconfigure the hardware. Service will be unusable until restored. If the Erase button is pressed, please call AT&T for further support.

Logging into the Base Unit Router

1. Connect a PC via Ethernet to any port other than LAN port 2 on the Base Unit Router (LAN port 2 may be reserved for special use).
2. Launch a web browser on the PC and enter the IP address of the AT&T Business in a Box® router. *in this example we will use the following address :*
`http://192.168.4.1/`

Note: If you have not received an IP address for your connected device via DHCP, you must statically assign your IP address on your PC from the IP address block you use internally. In this example we will use the following address. 192.168.4.2

3. A login window similar to the following should appear:

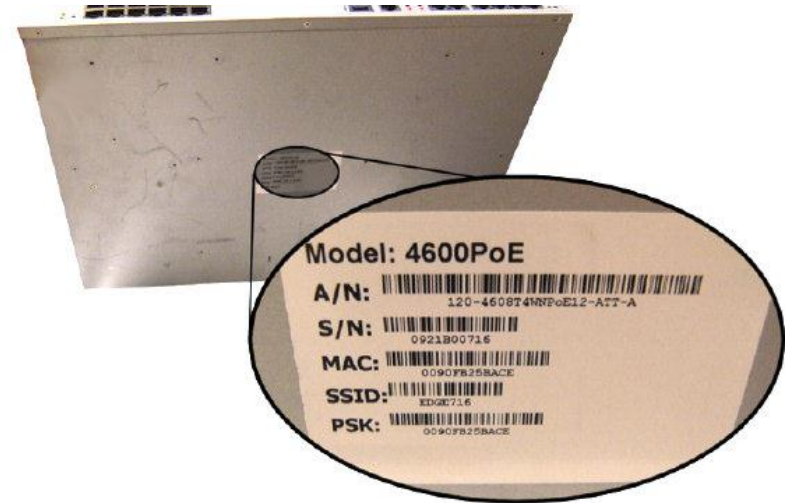
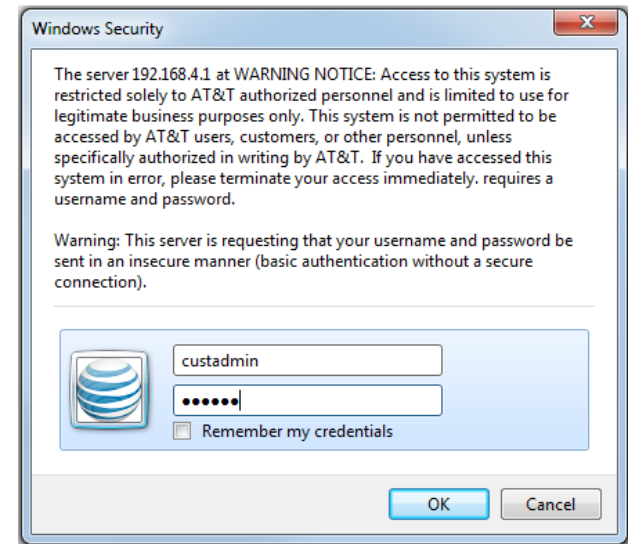
4. Enter “**custadmin**” in the **User name** field and the **last six characters of the MAC address** in the **Password** field.

You can locate the MAC address on the bottom side of the base unit router, as shown in the following figure:

Example Password: 25BACE

IMPORTANT: When entering the MAC address, always use uppercase characters.

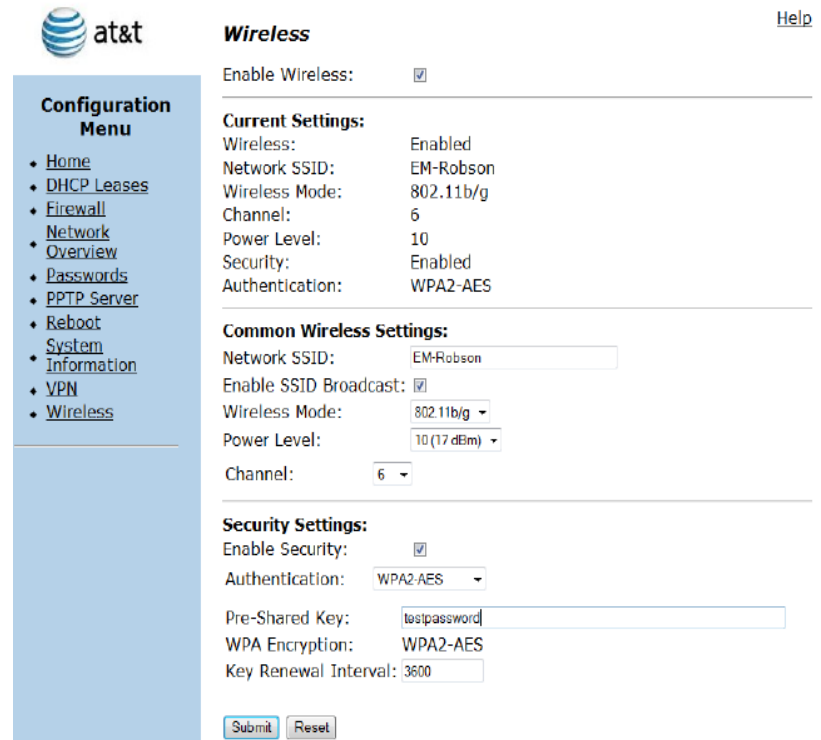
5. Upon successful login, the web configuration GUI appears. You will see the Configuration Menu on the left hand side of the screen which you will use in the customization of your device.



Configure the wireless (Wi-Fi) settings of the Base Unit Router

Prerequisite task: Log on to the base unit router as described in Logging into the Base Unit Router on the prior page.

1. Select **Wireless** from the Configuration Menu on the left side of the screen.
2. The screen to the right will appear
3. Select the Enable Wireless checkbox at the top of the screen to enable wireless capabilities.
4. Modification can be made to each of the dropdown options listed In the **Common Wireless Settings** and **Security Settings** sections to fit the needs of your location.
When finished Click **Submit**.
5. Wi-Fi is ready for use by devices to connect to the LAN.
6. On your Computer or other Wi-Fi capable device, utilize the devices configuration utility for Wi-Fi. The configuration utility should display the wireless network SSID you just created. In the Password field, enter the Pre-Shared Key (PSK) which is also commonly known as the password you created.
7. Once complete, you should be connected to the Base Unit router via Wi-Fi. Test your connection with your devices web browser to ensure connectivity.



The screenshot shows the AT&T Base Unit Router configuration interface. On the left is a 'Configuration Menu' with options: Home, DHCP Leases, Firewall, Network, Overview, Passwords, PPTP Server, Reboot System Information, VPN, and Wireless. The 'Wireless' option is selected. The main content area is titled 'Wireless' and includes a 'Help' link. It features three sections: 'Current Settings', 'Common Wireless Settings', and 'Security Settings'. The 'Current Settings' section shows 'Enable Wireless' checked, with values for Network SSID (EM-Robson), Wireless Mode (802.11b/g), Channel (6), Power Level (10), Security (Enabled), and Authentication (WPA2-AES). The 'Common Wireless Settings' section shows 'Enable SSID Broadcast' checked, with values for Network SSID (EM-Robson), Wireless Mode (802.11b/g), Power Level (10 (17 dBm)), and Channel (6). The 'Security Settings' section shows 'Enable Security' checked, with values for Authentication (WPA2-AES), Pre-Shared Key (|a|s|p|a|s|s|w|o|r|d|), WPA Encryption (WPA2-AES), and Key Renewal Interval (3600). At the bottom are 'Submit' and 'Reset' buttons.

at&t

Configuration Menu

- Home
- DHCP Leases
- Firewall
- Network
- Overview
- Passwords
- PPTP Server
- Reboot System Information
- VPN
- **Wireless**

Wireless [Help](#)

Enable Wireless:

Current Settings:

Wireless: Enabled
Network SSID: EM-Robson
Wireless Mode: 802.11b/g
Channel: 6
Power Level: 10
Security: Enabled
Authentication: WPA2-AES

Common Wireless Settings:

Network SSID: EM-Robson
Enable SSID Broadcast:
Wireless Mode: 802.11b/g
Power Level: 10 (17 dBm)
Channel: 6

Security Settings:

Enable Security:
Authentication: WPA2-AES
Pre-Shared Key: |a|s|p|a|s|s|w|o|r|d|
WPA Encryption: WPA2-AES
Key Renewal Interval: 3600

AT&T Business in a Box® Hardware Specifications

AT&T Business in a Box® CPE specifications	
WAN Ports	4xT1 CSU/DSU
LAN Ports	<ul style="list-style-type: none"> • 12 or 24x10/100/1000 Mbps Power Over Ethernet (POE) ports • Add-on POE module options available with either 8x10/100 Mbps POE ports or 24x10/100 Mbps POE ports
Phone/FXS	<ul style="list-style-type: none"> • 6xRJ11 connectors • Note: Additional option for Add-on Analog port expansion module with 8xFXS (RJ11)
Line/FXO	2xRJ11 connectors
Environmental	Operating Temperature: 41° to 104° F Humidity: 20% to 80%, non-condensing

Base Unit 12 or 24 (4608PoE version as noted on bottom of router) Power and Dimension Specifications	
Power Supply (AC)	100-240V, 2.5A, 50-60 Hz
Power Supply (DC)	48V, 3.75A
Total Power	200W (12 port & 24 port)
Switch Power	120W
Power per Port (avg.)	10W (12 port) 5W (24 port)
Power per Port (max)	14W
Dimensions (H/W/D)	1.75"/16.93"/13.19"
Weight	16.09 lbs
Regulatory	UL, CE, FCC Part 68, FCC Part 15, Industry Canada, CB

8 Port POE Module – Power and Dimension Specifications	
Power Supply (AC)	100-240V, 3.0A
Power Support	IEEE 802.3af with a maximum of 15.4W per port and a total of 70W for the switch
Dimensions (H/W/D)	1.73"/10.35"/6.69"
Weight	2.9 lbs
Regulatory	CE Mark, FCC Class A, CISPR Class A, EN 6100-4-2/3/4/5/6/8/11, UL/CUL (UL 60950-1, CSA 22.2 No. 60950-1), CB (IEC60950-1, EN60950-1)

24 Port POE Module – Power and Dimension Specifications	
Power Supply (AC)	100-240V, 7.0A
Power Support	IEEE 802.3af with a maximum of 15.4W per port and a total of 180W for the switch
Dimensions (H/W/D)	1.69"/17.32"/16.14"
Weight	12.7 lbs
Regulatory	CE Mark, FCC Class A, VCCI Class A, CISPR Class A, TUV/GS(EN60950), CB, CSA/NRTL(CSA 22.2 No. 60950)

8 Port Analog Expansion Module (4570 version as noted on bottom of router) – Power and Dimension Specifications	
Power Supply (DC)	12V, 3.0A
Dimensions (H/W/D)	1.7"/10"/7"
Weight	2.0 lbs

Legal Notice

This AT&T Business in a Box® User Guide ("Guide") is offered as a convenience to AT&T's customers. The specifications and information regarding the product in this Guide are subject to change without notice. All statements, information, and recommendations in this Guide are believed to be accurate but are presented without warranty of any kind, express or implied, and are provided "AS IS". Users must take full responsibility for the application of the specifications and information in this Guide.

In no event shall AT&T or its suppliers be liable for any indirect, special, consequential, or incidental damages, including, without limitation, lost profits or loss or damage arising out of the use or inability to use this Guide, even if AT&T or its suppliers have been advised of the possibility of such damage.